

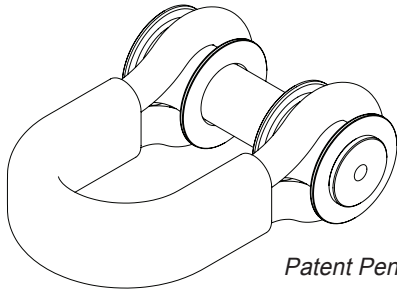


Mongoose D-Lite™ Shackle

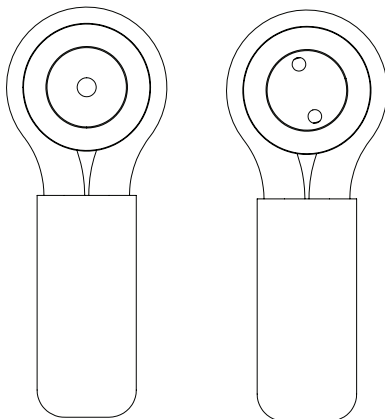
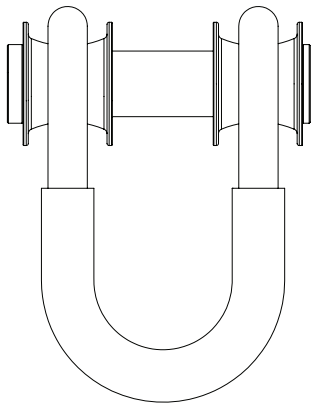
DONAGHYS
PERFORMANCE FIRST

Mongoose D-Lite™ Shackle

Heat treated high tensile steel alloy pins & thimbles with heat-treated, abrasion-resistant synthetic crown



Patent Pending



FEATURES/ BENEFITS

- Extreme strength-to-weight ratio, 50% lighter than conventional steel shackles
- Safer than conventional shackles (low risk of explosive disintegration)
- Hydrophobic fiber crown (no water absorption)
- Synthetic fiber crown maintains high strength around tight radius bends
- HMPE covered eyes to ensure high performance against abrasion
- Integrated locking end cap with locking screw
- High tensile steel alloy pins to suit most OEM recovery points

APPLICATIONS

- Conventional steel shackle replacement
- Salvage and Marine
- Heavy Vehicle Towing and Recovery

SYNTHETIC CROWN TECHNICAL

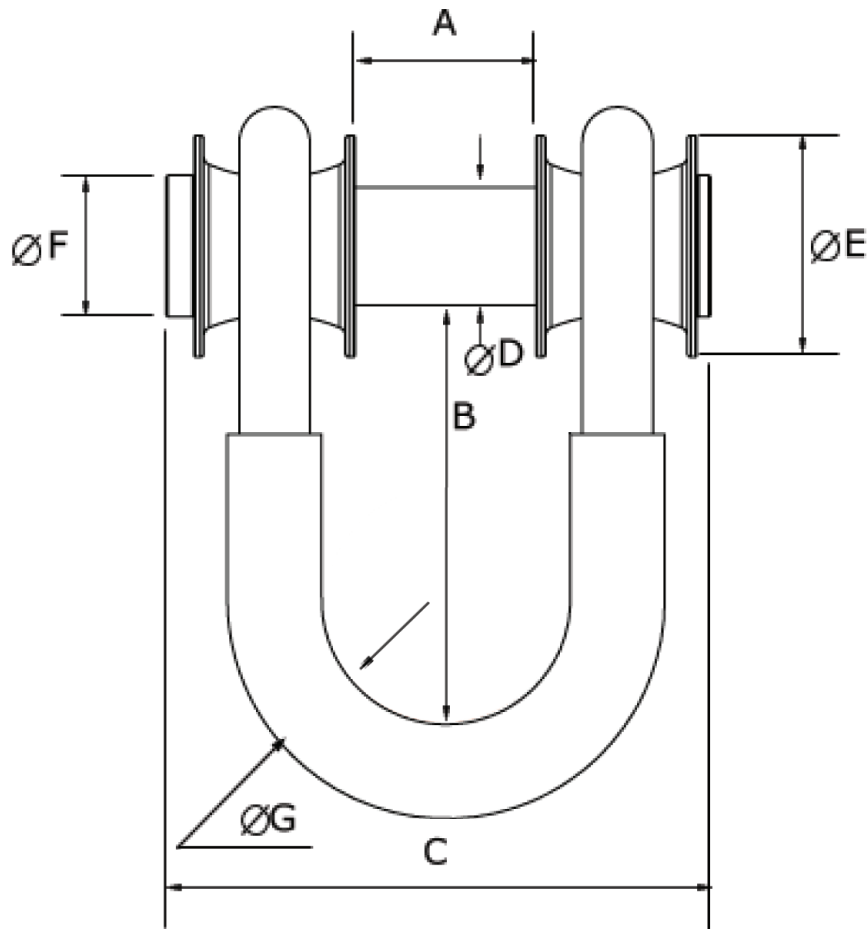
- Ultra-high molecular weight polyethylene
- 32 cN/dtex tenacity
- 3.5% elongation at break
- 0.98 g/cm³ density

STEEL ALLOY PINS & THIMBLES TECHNICAL

- Heat Treated High Tensile Steel Alloy
- 1200 MPa Tensile Strength
- 10% Minimum elongation (Ductility)
- 2-part epoxy coated

OPTIONS

- 62.5t MBL Grey Pin & Thimbles w/Pink Crown
- 125t MBL Green Pin & Thimbles w/Pink Crown
- 175t MBL Orange Pin & Thimbles w/Pink Crown
- 275t MBL Yellow Pin & Thimbles w/Pink Crown
- 350t MBL Blue Pin & Thimbles w/Pink Crown
- 400t MBL Black Pin & Thimbles w/Pink Crown
- 500t MBL Red Pin & thimbles w/Pink Crown



MBL	A	B	C	D	E	F	G	Weight
62.5T	33mm	300mm	121mm	35mm	65mm	42mm	25mm	2.2kg
125T	77mm	330mm	237mm	50mm	94mm	60mm	42mm	7.4kg
175T	88mm	330mm	265mm	58mm	110mm	70mm	46mm	11kg
275T	108mm	630mm	330mm	70mm	133mm	84mm	70mm	18.6kg
350T	122mm	630mm	380mm	80mm	157mm	95mm	80mm	30kg
400T	122mm	630mm	380mm	80mm	157mm	95mm	80mm	32kg
500T	145mm	630mm	420mm	95mm	186mm	114mm	90mm	47kg



Handling	<ul style="list-style-type: none"> • Never stand in line with rope / rigging assembly under tension • Shackle shall be clearly marked with Minimum Breaking Load if label has been removed or destroyed shackle must be tagged and removed from service immediately • Use only with compatible recovery equipment • Donaghys D-Lite Shackle is not to be used for Lifting • Ensure the end cap is fully engaged and locking screw securely hand-tightened before every use • Load should always be applied along the shackle axis, never across the side or at an angle of more than 10° • Avoid shock loading – apply load gradually to prevent sudden stress on the shackle • Lubricate the pin threads regularly to prevent seizure or galling • Do not paint over identification label • Do not modify the shackle shape – always use in manufacturer’s intended configuration. • Do not exceed rated capacity or use with incompatible components (e.g. undersized recovery points). • Immediately remove from service if there is any doubt about the integrity or condition of the shackle.
Abrasion	<ul style="list-style-type: none"> • The number one killer of synthetic rope or synthetic rope components is abrasion • Avoid dragging over sharp surfaces or driving over the shackle • Wherever possible, abrasive conditions should be avoided • Dirt and grit picked up by rope can work into the strands, cutting the inside fibers
Chemicals	<ul style="list-style-type: none"> • Avoid exposure to harsh chemicals or extreme temperatures • Sensitive to Strong oxidizing agents, Chlorosulfonic and Nitric acids at high temperatures. Slightly affected by Sodium Hydroxide (pH > 14) • Resistant to most acids and alkalis, cold alcohols, ethers, esters, ketones and bleaches. • If you have any doubt, please contact us for clarification
Temperature	<ul style="list-style-type: none"> • Do not expose to open flames, welding sparks, or temperatures above the rated limit of 144°C • Keep clean and dry when not in use
Storage & Care	<ul style="list-style-type: none"> • Store in a clean, dry bag or bin away from UV and chemical exposure • Store in a dry, well-ventilated area, ideally hung up or in dedicated bins or containers • UV degradation is indicated by discoloration and the presence of splinter and slivers on the surface of the rope
Inspection	<ul style="list-style-type: none"> • It’s important to inspect the Donaghys D-Lite shackle for wear and damage before and after each use. • No type of visual inspection can be guaranteed to determine actual residual strength accurately and precisely • Refer to Inspection Checklist for more information

Inspection Checklist for Mongoose D-Lite

Inspection Item	Pass/Fail Criteria	Action Required if Failed
Tagging/Markings	M.B.L or color coding visible and legible	Replace if missing or unreadable
Surface Condition	No cuts, frays, burns, or melted fibers	Replace if fibers show damage or heat exposure
Deformation	Shackle retains original shape when unloaded	Replace if deformed, stretched, or permanently elongated
Protective Sleeve	Intact, in place, no severe wear or loss	Replace or re-sleeve if damaged
Contamination	No oil, solvents, or chemical staining	Clean or replace if contaminated
Pin Security	Pin and nut structure is secure and original	Replace if nut or pin is bent or damaged

Recommended Inspection Frequency:

- Pre-use: visual and tactile inspection shall be done before and after each use.
- Routine: Full inspection after heavy recovery events or weekly if in regular use.

Formal: Documented inspection 3 months or according to site recovery SOPs



AUSTRALIA

Head Office - Sydney
PO Box 4205, Bradbury,
NSW 2560
Australia

FREEPHONE 1800 644 404

E-MAIL sales@donaghys.com

NEW ZEALAND

Head Office - Christchurch
16 Sheffield Crescent, Harewood
PO Box 20-449, Christchurch
New Zealand

PHONE +64 3 983 4169

FREEPHONE 0800 942 006

E-MAIL hoa@donaghys.co.nz

DONAGHYS
PERFORMANCE FIRST